



Engineering
Procurement
Construction
Maintenance

“We believe that careful preparation is the best guarantee for successful project implementation”

COMPANY INTRODUCTION

PT. Graha Usaha Teknik
Jl. Asem Baris Raya No.100A
Kebon Baru Tebet Jakarta 12830 Indonesia
Tel: +62-21-8378 7333
Fax: +62-21-8378 7222
Website: www.ptgut.co.id
Email: info@ptgut.co.id

Revision : 17
Date : Feb 2024

PT GRAHA USAHA TEKNIK is an Indonesian private equity firm, provides professional project management and implementation services in Engineering, Procurement, Construction and Maintenance for Industrial, Infrastructure and Energy in

- Electrical
- Instrumentation
- Mechanical
- Civil

Customer satisfaction is our foremost objective in every undertaking. We take full responsibility for everything that we do. Our operations are based on the principle of continuous improvement.

We believe that careful preparation is the best guarantee for successful project implementation. Our staff of highly motivated professionals serves our clients, adding value to the project and improving the efficiency and economy of the projects implementation.

PT GRAHA USAHA TEKNIK is controlled by an extensively experienced management team with minimum 15 years experience handling electrical, instrumentation, and mechanical and civil project, both of engineering & construction phase.

The quality of our services stems from our ability to fulfill and exceed our client's expectations, with high regard for health, safety, and the environment.

From The Founder

The idea to set up this company was to provide jobs for young Indonesians and a chance to develop and improve their skill besides making benefit to the company.

Four (4) years working in Government Institution and thirty-two (32) years working in an International Company, PT Siemens Indonesia, encouraged me to set up **PT GRAHA USAHA**

TEKNIK, the place for young professionals to express their capabilities and pride. "QUALITY IN EVERY ASPECT" is our motto in developing this company. Experience tell us that with smart and hard work, loyalty and mutual understanding together with the full support from experienced shareholders will help us step by step to reach the company's vision "**To become a world class EPC (Engineering, Procurement, Construction) and Maintenance company in the field of Electrical and Instrumentation**".



ISO 9001:2015

Certificate no:
422970 QM15

ISO 45001 : 2018

Certificate no:
422970 OHS18

PT Siemens Indonesia, as a worldwide company has given us trusted to execute electrical, instrumentation and telecommunication project in many numerous industries with high quality standard and commitment.

Learning from our valuable experience, we strongly believe we can cooperate with you to deliver best performance to your satisfaction and our mutual benefit.

Jakarta, March 2005

Founder,

Hidayatullah

Occupational Health, Safety & Environment Policy

PT Graha Usaha Teknik is committed to being an engineering & construction company leader in conducting our business responsibly so that we protect our employees, customers, supplier, sub- contractors, and other interested parties. Our Occupational Health, Safety & Environment (OHSE) commitment is a core value of the corporation and an integral part of our business activities.

Our Quality and OHS Policies

1. Provide Safe and Healthy Working Conditions for the **prevention of work-related injury and ill health.**
2. Follows the Legal/**Regulation and Other Requirements** which is Quality Management System and OHS Management System.
3. **Identified Risk to Eliminate of Hazards** and Reduction of OHS Risk using the following hierarchy control (Elimination, Substitution, Engineering Control, Administrative Control, and Personal Protective Equipment.
4. Assessment of **Risk and Opportunities** to Quality Management System and OHS Management System
5. Enhance of **continuously improvement** to Quality Management System and OHS Management System
6. Implementation of **Project Quality Plan and Occupational Health Safety Plan** as guidance Business of Company
7. Implementation **Communication, Participation and Consultation** to increase Quality Management System and OHS Management System.

Certified Management System

ISO 9001:2015

To achieve our goal delivering the best quality to our customer, PT Graha Usaha Teknik follows the most widely and internationally recognized ISO 9001:2015 as a Quality Management System Standard.

We proudly announce that PT Graha Usaha Teknik has ISO 9001:2015 certified on Aug 2018 with registration no: **422970 QM15**



CERTIFICATE

This is to certify that

PT. Graha Usaha Teknik
 Jl. Asem Baris Raya No. 100A Kebon Baru - Tebet,
 12830 Jakarta,
 Indonesia.

has implemented and maintains a **Quality Management System**.

Scope:
 EPC (Engineering, Procurement, Construction), Commissioning and Maintenance for Electrical and Instrumentation.

Through an audit, documented in a report, it was verified that the management system fulfills the requirements of the following standard:

ISO 9001 : 2015

Certificate registration no. 422970 QM15
 Valid from 2021-06-28
 Valid until 2024-06-27
 Date of certification 2021-06-28



DQS GmbH

Markus Bleher
 Markus Bleher
 Managing Director

Accredited Body: DQS GmbH, August-Schanz-Straße 21, 60433 Frankfurt am Main, Germany
 Administrative Office: DQS Malaysia, Suite 43-3 Setia Avenue, Jalan Setia Prima S U 13/S,
 Setia Alam Seksyen U 13, 40170 Shah Alam, Selangor - Malaysia



CERTIFICATE



This is to certify that

PT. Graha Usaha Teknik
 Jl. Asem Baris Raya No.100A Kebon Baru - Tebet,
 12830 Jakarta
 Indonesia

has implemented and maintains an **Occupational Health and Safety Management System**.

Scope:
 EPC (Engineering, Procurement, Construction) Commissioning and Maintenance for Electrical and Instrumentation.

Through an audit, documented in a report, it was verified that the management system fulfills the requirements of the following standard:

ISO 45001 : 2018

Certificate registration no. 422970 OHS18
 Valid from 2023-08-24
 Valid until 2026-08-23
 Date of certification 2023-08-23



DQS GmbH

Christian Gerling
 Christian Gerling
 Managing Director

Accredited Body: DQS GmbH, August-Schanz-Straße 21, 60433 Frankfurt am Main, Germany
 Administrative Office: PT DQS Certification Indonesia, The CEO Building Level 12,
 Jl. TB Simatupang No. 18 C, Cilandak Barat, 12430 Jakarta Selatan, Indonesia
 The validity of this certificate can only be verified by the QR-code.



ISO 45001 : 2018

To create the safe and healthy working environment, eliminate or minimize risk to employees and other interested parties.

PT Graha Usaha Teknik has passed the ISO 45001 : 2018 certification on August 2020 with registration no: **422970 OHS18**



SMK3 Certificate

To create the safe and healthy working environment, eliminate or minimize risk to employees and other interested parties.

PT Graha Usaha Teknik has passed the Certificate of Appreciation in Implemented of Occupational Safety and Health Management System on July 2018

FINANCIAL CAPABILITIES

04/12/23, 18:44

V36 Report



PT. GRAHA USAHA TEKNIK

D&B RATING

D&B rating provides an assessment of our business's financial strength & risk standing based on D&B International rating standard

PT Graha Usaha Teknik D&B Year **2023** is **4A3**

Business Information

iiNumber	1294169931
Registration No	AHJ-0057797.AH.01.02.TH 2021
Established Date	25 Feb 2005
Address	18A Floor, Office 8 Building Jl. Jend. Sudirman Kav. 52-53, SCBD Senayan, Kebayoran Baru, Kota Administrasi Jakarta Selatan 12190, DKI Jakarta, Indonesia
Address Coordinate	Latitude : -6.2294845 Longitude : 106.8056909
Telephone	+6221-83787333
Fax	+6221-83787222
Website	www.ptgut.co.id
Email	info@ptgut.co.id
Line of Business	Contractors - electrical work
Report Date	04 Dec 2023
Expired Date	30 Jun 2024
Print Date	04 Dec 2023

Payment Information		
No Paydex available.		
Financial Summary (Full Amount)		
Statement Date		31 Dec 2022
Net Worth	IDR	66,038,891,132 ↗
Sales/Revenue	IDR	184,389,569,122 ↗
Total Assot	IDR	136,060,437,789 ↗
Total Liabilities	IDR	70,021,546,657 ↗
Net Profit After Tax	IDR	1,722,395,199 ↘
Financial Ratio		
Current Ratio		2.13
Profit Margin / Return on Sales		0.93
Quick Ratio		1.04
Return on Assots		1.27
Total Debt to Equity		106.03

Remarks:
 "-" stands for 'insufficient information' or 'no comments'
 ↗ stands for 'increasing from last year'
 = stands for 'same amount with last year'
 ↘ stands for 'decreasing from last year'

Business Information

IndoInfo Rating & Composite Risk

ii Rating	BM3
Financial Strength	BM Based on tangible net worth of IDR 35,000,000,000 to IDR 99,999,999,999
Composite Risk	3 Slightly below average
iiScore	69-400
iiCredit Limit Reference	IDR 20,000,000,000
iiFinancial Capability	IDR 298,495,787,920
Litigation, Blacklist flag	Scase(s), No Flag
IndoInfo Rating Guide	

D&B Rating & Indicator **

D&B Rating	4A3
Financial Strength	4A
Based on tangible net worth of IDR 18,000,000,000 to IDR 84,999,999,999	
Risk Definition	3
Sufficient capacity for meeting payment liabilities	
DUNS Number	726507242

D&B Rating Guide

D&B rating consist of 2 parts, the Financial Strength and the Risk Indicator. Financial Strength is an indication of tangible network. The Risk Indicator is linked to the level of risk. It takes into account the financial condition and several factors such as trade reference, history, legal structure, management experience, etc.

2/20

Capabilities



Engineering, Procurement, Construction and Commissioning

1. Turn Key / EPC Electrical System, LV, MV and HV up to 150kV Substation.
2. Turn Key / EPC 70kV and 150kV Transmission Line including civil work.
3. Construction up to Commissioning of Electrical Work for Low Voltage Medium Voltage and High Voltage up to 500kV

Maintenance Services

We provide regular maintenance of electrical & instrument equipments during minor and major maintenance / inspection for several power plant in Indonesia:

1. North Duri Cogeneration Plant, MCTN / Chevron, Riau 3 x 125 MW
2. Muara Tawar Combine Cycle Power Plant, unit 3.1; 3.2; 3.3; 4.1; 4.2; 4.3
3. PAITON CFPP East Java, Unit 3, 5, 6, 7 & 8 by POMI and YTL Jawa Power
4. Cirebon Power Unit 1 (660 MW)
5. Tanjung Jati B, Unit 3
6. Dian Swastika Sentosa Grup (Sinarmas)
 - DSSP Power Sumsel (2x100MW)
 - DSSP Power SKS Kalimantan (Kalteng-1 2x100MW)
7. Lebak Banten Energi, CFPP 660MW Merak, Suralaya Banten
8. PLTU Keban Agung, Lahat Sumatera, PT Priamanaya Energi



Project Construction

1. Construction and Commissioning
 - Low and Medium Voltage Switchgear
 - Power transformers (casting resin + oil insulated)
 - Isolated Phase Busduct for GSUT
 - Relay Protection, Control Panel and SAS
 - HV Transmission Line (70kV, 150kV) and MV Distribution Line
 - Switchyard High Voltage Switchgear (70kV, 150kV, 275kV and 500kV):
 - Switchyard Air Insulated Switchgear (AIS)
 - Switchyard Gas Insulated Switchgear (GIS)
2. Construction or supervision for all Electrical and Instrumentation Installation.
3. Individual Instruments Calibration (bench and field)
4. Pre-Commissioning for instrumentation.
5. Providing Technical and Non-Technical Personnel



Construction Management

Construction Management Services ability and operability are designed into each of PT GRAHA USAHA TEKNIK contracts consistent with the scope, size, and complexity of the particular project.

Human Resources

The company offers to provide personnel to clients in the following ways:

1. Daily or Monthly Rate Basis.
2. Lump Sum for execution of particular scope of work.
3. Management fee for technical and non-technical personnel utilization

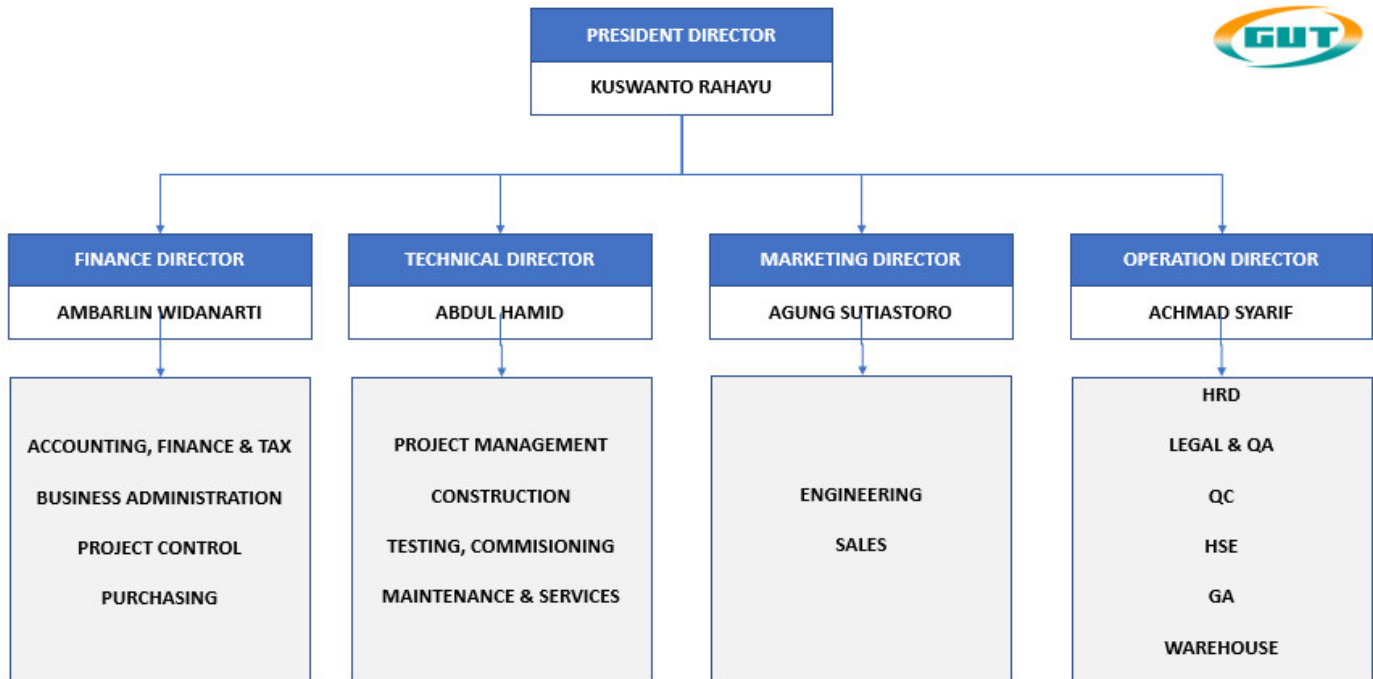
Legal Certification

" QUALITY IN EVERY ASPECT "

- | | |
|--|---|
| 1. Notary Decree | Titiek Irawati S, SH |
| 2. Notary Deed No. / Year | 39 / 2005 |
| 3. Tax No (NPWP) | 02.388.911.6-015.000 |
| 4. Ministry of Law & Human Right | C-18681 HT.01.01.TH.2005 |
| 5. Nomor Induk Berusaha (NIB) | 9120108120822 |
| 6. Izin Usaha Jasa Penunjang Tenaga Listrik (IUJPTL) | 1/AB.4.1/31.74.07.1006.04.007.K.1.a.b/2/-1.824.15/e/2021 |
| 7. Izin Usaha Jasa Konstruksi (IUK) | 506/C.31/31.74.07.1006.04.007.K.1.a.b/2/-1.785.56/e/2020 |
| 8. Sertifikat Badan Usaha Jasa Penunjang Tenaga Listrik (Pembangkit Listrik Tenaga Gas Uap) | 151.1.3.203.M.1C.3174.J19 / No. Reg 1709.01.J19 |
| 9. Sertifikat Badan Usaha Jasa Penunjang Tenaga Listrik (Pembangunan dan Pemasangan Instalasi Penyedia Tenaga Listrik) | 534.P.8.210.B.1C.3174.B23 / No. Reg 0534.02.B23 |
| 10. Sertifikat Badan Usaha Jasa Penunjang Tenaga Listrik (Pemeliharaan Instalasi Tenaga Listrik) | K14.1.8.510.M.1D.3174.J20 / No. Reg 2014.01.J20 |
| 11. Sertifikat Badan Usaha Jasa Penunjang Tenaga Listrik (Transmisi Tenaga Listrik Gardu Induk) | 533.P.8.211.B.1C.3174.B23 / No. Reg 0533.02.B23 |
| 12. Sertifikat Badan Usaha Jasa Konstruksi (Bidang Usaha Bangunan Gedung) | 0-3171-06-014-1-09-901171 |
| 14. Sertifikat Badan Usaha Jasa Konstruksi (Bidang Usaha Instalasi Mekanikal dan Elektrikal) | 0-3171-08-014-1-09-901171 |
| 15. DUNS Number | 1294169931 |

Business Organization

- ⊕ President Director : *Kuswanto Rahayu*
- ⊕ Technical Director : *Abdul Hamid*
- ⊕ Finance Director : *Ambarlin Widanarti*
- ⊕ Marketing Director : *Agung Sutiastoro*
- ⊕ Operation Director : *Achmad Syarif*



Tools & Equipments

ELECTRICAL TOOLS & EQUIPMENTS



Primary Injector
Omicron CPC-100



Three Phase Injector
Omicron CMC 256



Omicron CT Analyzer



Hipotronics PFT-503CM 50 kVAC



Programma CB Analyzer EGIL



Single Phase Injector
Programma Sverker 760



Mobile Oil Station
GlobeCore CMM-4,0

No	Description	Brand / Type	Serial No
1	Primary Injector, 3 units	OMICRON CPC-100 Enhance incl. BOOSTER 2000A	AG164A, NJ643U and MF180T
2	Tan Delta / Power Factor	OMICRON – CP TD1	FB565P
3	Three Phase Secondary Injector, 4 units	OMICRON CMC 256-6 basic & OMICRON 356	JA048S, HD418Q, GD841M, and NL934X
4	Single Phase Injector	PROGRAMMA Sverker 760	70602283
5	Circuit Breaker Analyzer, 2 units	PROGRAMMA EGIL and ISA CBA1000	2104009 and
6	CT Analyzer, 2 units	OMICRON VE000652	AI154T and
7	Contact Resistance, 2 units	MEGGER DLRO 200-EN and MOM2 / Megger	070607/1341 and 2003390
8	DC HIPOT / Dielectric Strength Test, 2 units	Phenix 475-20	18-2560 and 22-5507-3
9	AC HIPOT 2 unit	50 kVac and 60 kVac 250 mA	
10	AC/DC Power Supply	In 220 vAC: Out 110/220vDC & 24/48vDC	
11	Insulation Test 5KV	Various Model MEGGER MIT 515, Kyoritsu KEW 3125A, Kyoritsu 3128	
12	Residual Current Detector	Megger RCDT 310 S/N 080708/1987 ; Kyoritsu 5406A S/N W0185587	
13	Clamp Ampere	Various Brand and Model	
14	Digital Earth Tester, 8 unit	Fluke 1625; Megger DET4TC2; Kyoritsu 4105A	
15	Phase Sequence	Hioki 3126-01	808061
16	AC/DC Digital Clamp Meter	Kyoritsu 2003A; 2004; 2006; 2009A	
17	Digital Lux Meter, 2 units	Sanfix GM-1030B	1995814 and 1995790
18	Load Bank	For Battery / DC System 3 x 1,5Ω 680vDC	
19	Standard Isolated Tool Set	Digital AVO Meter Fluke 87, Screw, Megger & Etc	
20	Torque Wrench	Various Brand and Model (max.225 Nm)	
21	Engineering Software	ETAP Version 7.0.0	PTGUTINDO
22	CAD Software	AutoCad 2010; Inventor 2010	
23	Digsi & Simatic Software	Siemens for Siprotec	
24	Mili Ohm Meter	Lutron MO – 2001	F.76442
25	MegOhm Meter	Fluke 1520; Hioki 3453	101018833; 101116685
26	Temp. Humidity Meter, 3 unit	Fluke 971	11521516,
27	Booster current up to 2000A	OMICRON CP CB2	HH 802 P
28	Thermal Imager	Flir E4 E63900	63973000
29	Thermometer Infrared, 2 units	Fluke 62 Max	27421428 and
30	Multifunction Environment Meter	Dekko FT-7965	20180601513
31	Gas Detector, 3 units	BW Micro Clip XL	KA422-8011380, KA422-8011292, KA422-8049072
32	Grounding Set 150 kV, 4 units	Newpath HBS150N (3 stick)	

INSTRUMENTATION TOOLS & EQUIPMENTS



HART Communicator
Emerson 475



Pressure Calibrator HPC500



Advanced Signal Generator ASC301



PRESSURE CALIBRATOR
AMETEK – JOFRA



TEMPERATURE CALIBRATOR
AMETEK - JOFRA CTC650 &
CTC1200 A



ALTEK 311A

No	Description	Brand / Type	Serial No
1	HART / FIELD COMMUNICATOR	Emerson 475	11105099
2	PNEUMATIC DEAD WEIGHT TESTER, Range: 0.01 to 20 Bar.	AMETEK RK2-20B-SS	88153
3	HYDRAULIC DEAD WEIGHT TESTER (Type-T), Single Piston, Range: 10 to 400 Bar.	AMETEK TSQ-400B-1A/C	101227
4	PRESSURE CALIBRATOR with T975 Hand pump -system B. 1. PORT-1: Range - Vacuum to 2 bar / 30 psi. 2. PORT-2: Absolute Range - 0 to 20 bar / 290 psi.	AMETEK / JOFRA HPC502001C 0020ABCITBHX	1376094
5	PRESSURE CALIBRATOR with T975 Hand pump -system B. Range : 0 to 7 bar.	AMETEK / JOFRA HPC500 007C	2083071
6	PRESSURE CALIBRATOR with T975 Hand pump -system B. Range : 0 to 20 bar.	AMETEK / JOFRA HPC500 020C	1922154
7	PRESSURE CALIBRATOR with Handpump-system D Screw pump. 1. PORT-1: Gauge Range - 0 to 70 bar / 1.000 psi. 2. PORT-2: Gauge Range - 0 to 350 bar / 5.000 psi.	AMETEK / JOFRA HPC502070G 350GGBCITDWX	1376093
8	Advance Signal Generator, 2 units	JOFRA ASC-301	1776199
9	Portable Pressure Calibrator	GE Druck DPI 612	5219629
10	TEMPERATURE CALIBRATOR RANGE: 33°C to 650°C	AMETEK / JOFRA CTC-650B	587279-01483
11	TEMPERATURE CALIBRATOR RANGE: 150°C to 1200°C	AMETEK / JOFRA CTC-1200A	603307-00617
12	REFERENCE TEMPERATURE CALIBRATOR RANGE: 150°C to 1200°C	AMETEK / JOFRA RTC-250B	604878-00033
13	0 ~ 20 mA, Current Injector (Loop Calibrator)	DRUCK-UNOMAT UPS11	46838
14	RTD (Resistance Temperature Detector) Calibrator	ALTEK 311A BURSTER PT100	9358067 4503
15	Decade Resistance Box: 0.01 Ω - 900 kΩ	TIME ELECTRONIC 1051	4986B12
16	Compressor	SWAN SD-415 OIL LESS	
17	Vertical Air Receiver Tank	SWAN	
18	Refrigerated Air Dryer	SWAN SDE-11HI	
19	Oil removal Filter (removal oil vapor)	SWAN	



Dry Air Compressor Unit



Primary Injector

MECHANICAL TOOLS & EQUIPMENT



Anritsu Sitemaster S331E



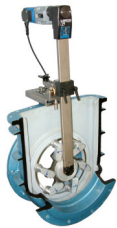
SunLite GigE SLGE



BER Test Sunlite E1

No	Description	Brand / Type	Serial No
1	Grinding-Lapping Machine Portable machine for grinding and lapping of sealing faces in gate valves, gates and flanges,	EFCO-SL-15.02 SL-Series, SL-15 EFCO Germany	02.154.0272
2	Valve Test Bench (max press 8000 psi)	Customized	-
3	Supporting Workshop <ul style="list-style-type: none"> • Lathe Machine 800 x 2000 • Drilling-Milling Machine • Surface Grinding Machine • Welding Machine • Cutting Torch • Measurement Tools 	Guang zhou Kawakami - Weldtech - Mitutoyo	- - - - -
4	Installation Tools for separabel Connector	PFISTERER	305-758-004

SPECIAL CONSTRUCTION EQUIPMENTS



Grinding-Lapping Machine for Gate Valves, Gates, Flanges.
EFCO-SL-15.02



Insulation Tester



Installation Tools for Separabel Connector



EFCO Adjustable arms are used on various seat diameters

No	Description	Brand / Type	Serial No
1	Heavy Duty Hydraulic Winch Cable Puller <ul style="list-style-type: none"> • Spindlewinde (winch) cable puller • Cable Drum Transport and Laying Trailer 	BAGELA RKW 5010, Year 1995 BAGELA BTT-8020, Year 1998	W09W05202SK B13502 W09T80109W BB13105
2	Theodolite	PENTAX ETH-335	501114
3	Scaffolding Pipe 6mtr & Accessories	Halysafe	1000 btg
4	Scaffolding Frame & Accessories	Multisarana	200 set
5	Automatic Level	Nikon AS-2C	679265
6	Cable Roller Straight	Modification by PT. GUT	150 pcs

SPECIAL TOOLS & EQUIPMENTS

SF6 Gas Handling & Treatment Machine Set

No	Description	Brand / Type	Capabilities
1	Service Chart (SF 6 - Gas Handling Devices and Units)	DILO Type L057R01, Economy Series	<ul style="list-style-type: none"> a. Handling SF6 Gas with safety as per international regulation. b. Recovery (final vacuum of < 1 mbar) and putting into storage of SF6-gas from gas compartments. c. The gas compartment can be flooded with air, evacuated and filled with SF6 – gas. d. SF6 Gas purifying (during recovery & filling), effectively adsorb decomposition products and moisture.
2	SF 6 - Gas Storage Tank / Liquid	DILO Type B044R12, Capacity 600 Liter	<ul style="list-style-type: none"> a. The pressure vessels are produced and approved in accordance with the corresponding regulations. (e.g. 97/23 EC). b. The capacity up to 600 liter with 71 bar max. pressure. c. Can store the SF6-gas in gaseous form or at higher pressure in liquid form.
3	SF6 Multi Analyser (with gas return system) 2 units	WIKA-GA11 And RA-912F	<ul style="list-style-type: none"> a. The SF6 Multi Analyser allows to determine the three most important parameters for reuse of SF6-gas with only one measurement: <ul style="list-style-type: none"> i. SF6 concentration [%] ii. Moisture concentration (dew point) in degree Celsius. iii. SO2 concentration [ppmV] b. Automatically pumping the analyzed gas into the compartment (no need external storage).
4	Filter unit	DILO Type B071R11	<ul style="list-style-type: none"> a. Portable separating filter unit (pe 25 bar) b. For adsorption of oil-aerosols, moisture and gaseous or dusty decomposition products.
5	Vacuum Pump Unit	DILO B046R20	This DILO vacuum pump unit is "powerful"- its nominal suction capacity is 200 m ³ /h at 50 Hz for quick and reliable evacuation of air to a final vacuum of 1 mbar
6	Leak Detector	DILO 3-033-R002	2000000971
7	Leak Pointer	DILO 3-033-R002	2000001074



Service Chart (SF 6 - Gas Handling Devices and Units)



SF 6 - Gas Storage Tank / Liquid



DILO Leak Detector



SF6 Multi Analyser (with gas return system)



Filter Unit



Circuit Breaker Analyzer ISA

Civil Capabilities



In line with PT Graha Usaha Teknik progress and experience in doing electrical projects, mainly Substation and Transmission Line, the capability of handling civil work is a must as in the build a control building, concrete foundations, cable duct, and many other civil works. Therefore, the management of PT Graha Usaha Teknik believes that it is necessary to include civil works as a company capabilities improvement program.



In 2011, we started our very first civil work project of 70kV & 150kV Remote Substation Construction in Turn Key Basis - EPCC (Engineering, Procurement, Construction and Commissioning) scheme; a project entrusted by PT. Makmur Sejahtera Wisesa (Adaro Group).

In this project, the civil work is EPC scheme. The engineering phase started from topography survey, soil investigation, design, until foundation calculation and so on, while in the construction phase, we do all the work ourselves; from land clearing and earth moving work around 25,000 cubic meters, digging, form work designing until concreting foundations as well as construct the cable duct, drainage, and build supporting buildings and warehouse.



Based on the success of the above EPC Civil project, we continue our work in several projects. To date, we have been working in several civil works namely the civil engineering projects for 150kV Kota Agung Substation in Lampung – Sumatera in associate with Semangka Hydro Power Plant; Coal Shed & Ground Hopper Shed (EPC) construction project for the 2x35MW power plant of Adaro Group in South Kalimantan. We also awarded by Hyundai Engineering Co Ltd for the civil works in KALSEL1 2x100MW Coal Fire Power Plant project, owned by PT Tanjung Power Indonesia (Adaro Group and EWP Korea) for 150kV Double Circuit Transmission Line of 5 km length, as well as 150kV substation consisting of 7 bays with Turn Key project.



Civil Works Capabilities

1. Preliminary Engineering

1. Topography Survey
2. Soil Investigation (CPT, SPT, Plate Load Test)

2. Engineering

1. Loading Data
2. Foundation Calculation
3. Design Foundation
4. Anchoring Calculation
5. Design Control Building
6. Warehouse

3. Construction

1. Power Transformer Foundation and Fire Wall
2. 150kV HV Equipment Foundation
3. 150kV Gantry Tower Foundation
4. 150kV Cable Duct Substation
5. 150kV Transmission Tower Foundation
6. Land Clearing of ROW (Right of Way) for Transmission Line
7. Access Road as per PLN (owner) Standard
8. Fence, Drainage and Landscaping
9. Control building

4. Method Statement

1. Clearing and Grubbing
2. Excavation and Back filling
3. Steel Reinforcement
4. Job Mix Design for Civil
5. Foundation Work
6. Anchor Bolt Installation



Mechanical Capabilities

In mid-2009, with a growing our business and capabilities, and for more focus on demand and customer satisfaction, the mechanical division was formed, which is integrated with the other divisions.

Mechanical Division is supported by experts who have minimum 10 years experience, dedicated and committed to achieving customer satisfaction. Currently this division specializes in Maintenance and Repair Valves (Hand, Control, and Safety) and Diesel Engine Generators.

Diesel Generator Engine Recondition

We specialized in the reconditioning of diesel engine generators. We also make the components of diesel generator engines, such as: cylinder liner, cylinder head, exhaust manifolds, heat exchangers, and other components at competitive prices.

In our experience, diesel generator engines which we have repair and reconditioning, including:

- MAK 8M 453
- DEUTZ MWM TBD 232 V12
- DEUTZ F 10L
- MIRRLESS
- COCKERILL
- Provide components, such as: Flexible for Exhaust, liner, exhaust manifolds and other components for all types of diesel engine generators.

Valve Repair

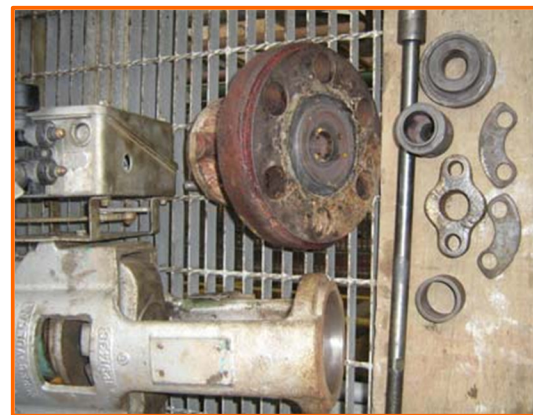
Repair all brand and common size of valves (1" up to 24") with International Standard (API, ANSI, JIS)

- Hand Valve : Gate valve, Check valve, Ball valve, Globe valve, Plug valve, Butterfly valve
- Safety Valve : Vacuum valve, Pressure Safety valve, Pressure Relief valve, Pilot valve
- Control Valve : Actuator, Controller, Positioner (Pneumatic, Hydraulic, and Electric)
- Online Repair
- In-situ Repair
- Online Leak Sealing



Valve Repair Scope of Work

- | | | |
|--------------------------|---|-------------------|
| 1. Visualization check | 6. Check Seat and Disc | 10. Machining |
| 2. Documentation | 7. Check Flanges | 11. Lapping |
| 3. Pretest | 8. Testing with : API 598, ANSI
B16.34 or B.16.104 | 12. Assembling |
| 4. Overhule and Cleaning | 9. Welding | 13. Painting. |
| 5. Check Spindle/Stem | | 14. Certification |



EXPERIENCE LIST

POWER PLANT PROJECT

POWER PLANT PROJECT	END USER	ORDER	YEAR
KALSELTENG 2x100 MW, Coal Fired Power Plant, PLTU ASAM-ASAM, South Kalimantan Electrical and C&I Work Balance of Plant	PLN	Hyundai Engineering & Co PT Hein Global Utama	2021 - 2023
PLTU Jawa 9 & 10 Suralaya Banten <ul style="list-style-type: none"> • 2 x GSUT 500/28.35kV, 1370MVA • 4 x Aux Transformer 60MVA • 2 x GCB • Isolated Phase Busduct (DAQO) Electrical Construction and Testing / Commissioning	PT Indo Raya Tenaga Doosan Enerbility	Donghwa Electric Engineering	2022
Supply & Installation Siemens SIVACON Switchgear for ID FAN Upgrade Paiton Unit 6	PT Jawa Power Paiton	PT Jawa Power YTL Paiton	2021
PLTU 2 x 1000MW Central Java (BATANG) 2 x GSUT @1134MVA and 6 x UAT @65MVA Transformer Oil Purification & Electrical Test	PT Bhimasena Power Indonesia	Sumitomo Corporation BTG Division	2018 - 2019
Testing MV & LV Panel at PLTU Batang Project Electrical Panel Test	PT Bhimasena Power Indonesia	Sumitomo Corporation	2018 - 2019
PLTU 2 x 1000MW Central Java (BATANG) 500kV GIS SUBSTATION Testing and Commissioning Services	PT Bhimasena Power Indonesia	BUT Black and Veatch International	2019
SINOHYDRO 2x100MW CFSPP BENGKULU Contruction and Commissioning <ul style="list-style-type: none"> • 150kV GIS (NHVS) 7 Bays and 230m GIL • 150kV AIS 2 bays in PLN Site (Pulau Bai) • Steel structure, OHL & DC System 	PT Tenaga Listrik Bengkulu	NE ELECTRIC	2018 - 2019
KALSEL 2x100 MW, Coal Fired Power Plant, Tanjung Tabalong, South Kalimantan Electrical and C&I Work Balance of Plant	PT Tanjung Power Indonesia	Hyundai Engineering	2016 - 2018
Pontoon Assembly and Launching Works	PT Tanjung Power Indonesia	PT Hein Global Utama	2018
Supply & Installation Switchgear for Compressor #1	PT Jawa Power Paiton	PT Jawa Power	2018
Pengadaan dan Pemindahan Outgoing GT-2.3 dari 500kV ke 150kV PLTG Gresik EPC Isolated Phase Busduct Modification and Relay Control Panel	PT PJB UP Gresik	PT Rekadaya Elekrika	2018

Supply & Install GSUT 177MVA and Isolated Phase Busduct (IPB) for PLTGU Tanjung Priok GT-2.1 Consortium with PT Hitachi Asia Indonesia	PT Indonesia Power	PT Indonesia Power	2017
Design, Supply, Installation, & Commissioning of 20kV Distribution System Mining Electrification Batch-2 Package 2 (Additional PAMA PUMPS) Engineering, Procurement, Construction, Commissioning	PT. Makmur Sejahtera Wisesa	PT. Makmur Sejahtera Wisesa	Aug 2015 - Feb 2017
Design, Supply, Installation, & Commissioning of 20kV Distribution System Mining Electrification Batch-1 Office 73 & Wara Crossing Plant Engineering, Procurement, Construction, Commissioning	PT. Makmur Sejahtera Wisesa	PT. Makmur Sejahtera Wisesa (Adaro Grup)	May 2015 - 2016
PAITON UNIT-8 Replacing DS & VT for 500 kV GIS	IPMOMI	HITACHI ASIA	2016
Coal Fired Power Plant Babelan Project Installation & Commissioning of GCB, IPB, 6.3kV Switchgear, LV MCC	PT. Cikarang Listrindo	PT ABB Sakti Industri	2015 - 2016
STG18 & GTG 22 Construction & Commissioning 2 Trafo Bay 150kV Switchyard & IPB (Isolated Phase Busduct) & Power Transformer	Sengkang Energy	PT ABB Sakti Industri	2012
Tanjung Power Plant 2x30MW - Kalsel Electrical and Instrumentation Construction and Commissioning work	ADARO ENERGY, Tbk.	PT Punj Lloyd Indonesia	2012
Isolated Phase Busduct (IPB) MV & LV Construction & Testing	Merak Energy Banten	PT ABB Sakti Industri	2012
Paiton-3 Expansion Project 815MW East Java Test and Commissioning: 500kV Switchyard (2 bays), MV / LV Power Distribution System (Transformer, Busduct, MV Switchgear, LV Switchboard), Substation Automation System.	PT Paiton Energy	Mitsui & Co Ltd	2011-2012
PLTU ASAM-ASAM 2 x 60 MW South Kalimantan Test and Commissioning: MV / LV Power Distribution System (Transformer, Busduct, MV Switchgear, LV Switchboard), Substation Automation System.	PLN PLTU Asam-Asam	PT Wijaya Karya	2011-2012
ULUBELU Geothermal Power Plant Construction & Commissioning 15kV Isolated Phase Busduct	PLN	PT SCHNEIDER Indonesia	2011-2012
PLTU BORANG 2 x 60MW Construction and Commissioning: MV / LV Power Distribution System (Transformer, MV Switchgear, LV Switchboard).	PLN	PT Wijaya Karya	2011-2012
Tanjung Jati-B Expansion Project Unit 3 & 4 2 x 660MW Coal Fired Power Plant Test and Commissioning: 150kV Switchyard, MV / LV Power Distribution System, Isolated Phase Busduct	P.T. CENTRAL JAVA POWER	TOSHIBA CORPORATION	2011

PT Dian Swastika Sentosa Power Plant Serang Erection and Commissioning 20kV GIS and 150kV GIS	DSS Indah Kiat	PT ABB Sakti Industri	2011
PLTU TANJUNG JATI B EXTENSION SITE Commissioning 150kV CT and CVT, 500kV / 150kV Substation	P.T. CENTRAL JAVA POWER	PT Siemens Indonesia PTD	2010
2 x 660MW Tanjung Jati B Expansion Unit 3 & 4 Modification MV Panel, Testing of Transformers, Busduct and MV Switchgear.	Sumitomo Corporation	Black & Veatch Mitsubishi Toshiba;	2010
PT PLN Sumatera Utara EPC Power System for SCADA System	PT PLN Kitlur SUMUT	PT Siemens Indonesia PTDEA	2008
Sondu Miriu Hydropower Plant, Kenya Africa Electrical Commissioning, 5 line bay 135kV Switchyard	Kenya Hydro Power Plant	PT Siemens Indonesia PTD	2008
PT Riau Andalan Pulp & Paper, Riau Electrical, Instrument & Control Construction & Commissioning Supervision Work for New Steam Turbine Generator 112 MW	PT Riau Andalan Pulp & Paper	PT Siemens Indonesia Power Generation	2008
PT PLN BATAM Commissioning 150kV Substation (Baloi & Panaran Substation)	PT PLN BATAM	PT Siemens Indonesia PTD Division	2007
DI LINH & Ca Mau I, II & III Power Plant VIETNAM Construction Supervision and Commissioning 500 kV ; 220 kV Substation	Vietnam Electricity (EVN)	PT Siemens Indonesia PTD Division	2006 - 2007
HUNTLY POWER STATION, Genesis Energy, NEW ZEALAND Commissioning 11Kv Switchboard	Huntly Power New Zealand	PT Siemens Indonesia PTD	2006
PT Krakatau Daya Listrik, Cilegon 80 MVA Oil Immersed Transformer Construction & Pre-commissioning	PT Krakatau Daya Listrik,	PT Siemens Indonesia	2005

EXPERIENCE LIST			
SUBSTATION AND TRANSMISSION LINE PROJECT	END USER	ORDER	YEAR
Loyang Substation Singapore Supply and Install Relay Control Panel ➤ 2 ea Control Panel ➤ 2 ea Protection Panel	Loyang Power Singapore	Siemens Energy Singapore	2023
150kV Transmission Line East Bali Solar Power Plant 25MWP (Medco) Scope of Work: EPCC turn key project	MEDCO POWER	PT. MEDCOSOLAR BALI TIMUR	2023
Construction & Commissioning Work for 150kV GIS Senayan III Substation 150kV GIS by HITACHI consist of 2 Trafo Bays, 2 Line Bays, 1 Coupler Bay + Bus VT	PT PLN	PT. Hitachi Asia Indonesia	2021
Penggantian Aksesoris Tower HUTT 150kV Line KDL-PLN Cilegon Baru Maintenance Transmission Line	PT. Krakatau Daya Listrik	PT. Krakatau Daya Listrik	2019
Jasa Pengalihan Jalur Transmisi Listrik 70kV OPCC North Wara Project EPC for Transmission Line 70kV	PT. Makmur Sejahtera Wisesa	PT. Makmur Sejahtera Wisesa	2019
Design Engineering of 500kV Transmission Line Cable Support Unit 3 Project Engineering Work	PT. Paiton Energy	PT. Paiton Energy	2019
Construction for SMGP 70kV & 150kV Transmission Line & Substation Project at Sorik Marapi Geothermal Mandailing Natal, North Sumatra Substation and Transmission Lines execution and completion of construction, supply of raw material, site delivery, construction, installation, inspection and testing, pre-commissioning & commissioning.	KS ORKA Sorik Marapi Geothermak	Powerchina Huadong Engineering Corporation Limited	2017-2019
Bogasari Paletizing and New Power - Installation Service Installation and Testing Service	Bogasari	PT Siemens Indonesia	2018

<p>KALSEL 2x100 MW, Coal Fired Power Plant, Tanjung Tabalong, South Kalimantan Scope of Work: EPCC</p> <ul style="list-style-type: none"> - KALSEL Switchyard Foundation (5 bays) - Tanjung Substation Extension Foundation (2 bays) - 150 kV Transmission Line Tower Foundation (15 towers) - 150 kV Transmission Line Crossing Gantry Foundation (2 sets) - Substation Drainage - 20 kV Transmission Line Pole Foundation (7 km) - Water Pump House Foundation - Raw Water Transfer Pipe Line Foundation (7 km) 	<p>PT Tanjung Power Indonesia</p>	<p>Hyundai Engineering</p>	<p>2016 - 2018</p>
<p>GI Pangkalan Susu 275 kV Substation Installation & Commissioning Works</p>	<p>PLN</p>	<p>NR Electric</p>	<p>Jun 2017 - 2018</p>
<p>Scattered Transmission & Substation Export Credit Package 4, 150 kV GIS Extension for Jakarta Extension 2 Bays Feeder of 150kV GIS Manggarai & Modification 2 Bays 150kV GIS Kemang</p>	<p>PLN</p>	<p>PT. Multifab</p>	<p>2015 -2018</p>
<p>150 kV Substation PLTU Anggrek Gorontalo 2 x 25 MW Re-Engineering, Installation & Commissioning, Material Procurement for 150kV Substation</p>	<p>PLN</p>	<p>PT. Rekadaya Elektrika</p>	<p>May 2015 - 2016</p>
<p>Mining Electrification Batch-1 Design, Supply, Installation & Commissioning of 20kV Distribution System</p>	<p>PT. Adaro</p>	<p>PT. Makmur Sejahtera Wisesa</p>	<p>May 2015 - 2016</p>
<p>Mining Electrification Batch-2 Design, Supply, Installation & Commissioning of 20kV Distribution System</p>	<p>PT. Adaro</p>	<p>PT. Makmur Sejahtera Wisesa</p>	<p>May 2015 - 2016</p>
<p>RAJAMANDALA Electrical Engineering for 150 kV Substation & Power House</p>	<p>PT. Rajamandala Electric Power HYUNDAI Engineering</p>	<p>HYOSUNG</p>	<p>2015 - 2018</p>
<p>Scattered Transmission & Substation Export Credit Package 4, 150 kV GIS Extension for Jakarta Installation & Testing for 150kV GIS Dukuh Atas, Kebon Sirih & Gambir</p>	<p>PLN</p>	<p>SIEMENS</p>	<p>2015</p>
<p>150kV Substation & MV System for Mulia Glass Installation of 150kV Hybrid Pass-Mo, 2 Bays</p>	<p>PT. Mulia Glass</p>	<p>PT. ABB Sakti Industri</p>	<p>2015</p>
<p>Design, Supply, Installation, & Commissioning of 20kV Distribution System Mining Electrification Batch-2 Package 2 (Additional PAMA PUMPS) Engineering, Procurement, Construction, Commissioning</p>	<p>PT. Makmur Sejahtera Wisesa (ADARO)</p>	<p>PT. Makmur Sejahtera Wisesa</p>	<p>Aug 2015 - Feb 2017</p>

BATANGAS PROJECT Supervision of Switchyard Installation	Siemens Philippine	Siemens Philippine	Apr 2015 - Oct 2015
Payoselincah Installation of 150kV Hybrid Pass-Mo, 2 Bays, 60 MVA Transformer, MV Cable & Termination	PT. Siantar	PT. ABB Sakti Industri	2015
PLTGM Payo Selincah Jambi Construction & Testing 150kV Substation Trafo Bay	PLN	PT ABB Sakti Industri	2014
150 kV GI Mariana Extension Bay Engineering, Procurement, Construction & Commissioning	PLN	PT. Rekadaya Elektrika	2014
115kV GIS Siemens type 8DN8-2 6 Bays at Amole Site and 5 Bays at Power Plant C Construction and Testing	Freeport Indonesia	PT. Siemens Indonesia	2013
3 Bay 70kV Substation Construction and Testing	PT. Indorama	PT ABB Sakti Industri	2013
PLTG Peaking Kaltim Construction & Commissioning 2 Bay 150kV Switchyard	PLN	PT Wijaya Karya	2013
PT Cikarang Listrindo Extension Phase VI Construction & Commissioning 150kV Switchyard, MV / LV Power Distribution System (Transformer, Busduct, MV Switchgear, LV Switchboard), Substation Automation System.	PT Cikarang Listrindo	PT Siemens Indonesia	2012
70kV Substation PLTU Tanjung / Adaro Test and Commissioning 70kV Substation	PT Adaro Tbk	PT ABB Sakti Industri	2012
EPCC Contract 66kV Remote Substation Interconnecting with 150kV PLN Maburai Tanjung South Kalimantan Engineering, Procurement, Construction and Commissioning 66kV SwitchYard (2 Trafo bays, 2 line bays, 2 line bays spare) 150kV SwitchYard (1 line bay); Include SAS	PT Makmur Sejahtera Wisesa (Adaro Group)	PT Makmur Sejahtera Wisesa (Adaro Group)	2011 -2012
PLTU Biringkasi Semen Tonasa Construction, Test and Commissioning 70 kV Substation	PT Semen Tonasa	PT Siemens Indonesia PTDH	2011 -2012
Simangkuk 150kV / 275kV Substation Test and Commissioning 150kV (2 Line bay; 1 Trafo bay; 1 Bus coupler bay) 275kV (5 Line bay; 1 Trafo bay)	PLN	PT Siemens Indonesia PTDH	2011
70kV GIS (Hybrid) Semen Tonasa V Test and Commissioning (3 Trafo, 3 Line Bay, 1 Bus Coupler)	PT Semen Tonasa	PT Siemens Indonesia PTDH	2011
SCADA point to point test & commissioning Substations in Madura	PLN	PT Arlisco	2011

<p>150kV Substation Semen Tuban Construction, Test and Commissioning 150 kV Substation</p>	PT Semen Tuban	PT Siemens Indonesia PTDH	2011
<p>PT Cikarang Listrindo Extension Phase VC Construction & Commissioning 150kV Switchyard, MV / LV Power Distribution System (Transformer, Busduct, MV Switchgear, LV Switchboard), Substation Automation System.</p>	PT Cikarang Listrindo	PT Siemens Indonesia	2010 - 2011
<p>PT Cikarang Listrindo Extension Phase VB Construction & Commissioning 150kV Switchyard, MV / LV Power Distribution System (Transformer, Busduct, MV Switchgear, LV Switchboard), Substation Automation System.</p>	PT Cikarang Listrindo	PT Siemens Indonesia	2009 - 2010
<p>PT Cikarang Listrindo Extension Phase IVB Installation of additional MV Panels & Commissioning 150kV Switchyard Phase IVB, Transformer, Relay, Safety & Control Devices</p>	PT Cikarang Listrindo	PT Siemens Indonesia	2007 - 2008

EXPERIENCE LIST

OIL & GAS PROJECT	END USER	ORDER	YEAR
Supply, Modification and Install Siemens Sivacon 8PT Drawer Arabian Drilling Singapore	Arabian Drilling Singapore	Siemens Energy Singapore	2023
RDMP Pertamina Balikpapan Package 2 Electrical	PT Kilang Pertamina Balikpapan	Hyundai Engineering & co	2021 - 2023
Pertamina Kilang Balongan RCC REVITALIZATION PERTAMINA RU VI ELECTRICAL & INSTRUMENT WORK	PT Kilang Pertamina Balongan	PBAS Hexa Prima	2022
Pertamina EP Cirebon X-Ray Alpha Flow Station Offshore Retrofit and calibration turbine monitoring system.	Pertamina	Audy	2012
PNG LNG Project Installation Supervision and Commissioning, E-House, MV & LV System	Papua New Guinea LNG	Siemens Pte Ltd Singapore	2011 - 2012
Betara Development Complex (BCD) Project Jambi Installation and Pre-commissioning MV System	MEDCO	PT. Meindo Elang Indah	2011
CPP and AUP Ujung Pangkah Field Modification, Installation and Commissioning Busbar Service	HESS	PT ABB Sakti Industri	2011
Central Processing Platform (CPP) and Auxiliary & Utility Platform (AUP) Ujung Pangkah Field Electrical, Instrumentation and Telecommunication Construction and Commissioning Work at PT Gunanusa Utama Fabricators' Cilegon Shipyard and at field site, Ujung Pangkah, Gresik East Java during Hook Up stage	HESS	PT Gunanusa Utama Fabricators	2010
NOV Labroy Jack up Drilling Rig Pre Commissioning and Commissioning MV System	National Oil Well	Siemens Pte Ltd Singapore	2009
HELIOS Singapore Modification MV Switchgear in Jurong Island Singapore	HELIOS Singapore	Siemens Pte Ltd Singapore	2008 - 2009
B281 & B288 GSF KFELS Norway Project Installation and Commissioning MV System	Maersk	Siemens Pte Ltd Singapore	2008 - 2009
MODEC Cidade de Niteroi FPSO MV18 E-House Project Installation and Pre-commissioning MV Panel at Bohai Oil Marine Engineering & Supply Co.,Ltd Tianjin, China	Bohai Oil Marine	Siemens Pte Ltd Singapore	2008
Arthit Field Off Shore, Commissioning LV MCC,	PTT Exploration and Production, Thailand	Siemens Pte Ltd Singapore	2008

Adriatic LNG Project, Singapore & Cadiv Spain MV Panel Installation & Commissioning	Adriatic LNG Spain	PT Siemens Indonesia PTD Division	2008
Odfjell-DSME Korea Generator Package Field Commissioning	ODFJELL	Siemens Pte Ltd Singapore	2008
Prosafe Azurite FDPSO Project Electrical Commissioning	Prosafe	Siemens Pte Ltd Singapore	2008
TUNU FIELD DEVELOPMENT PROJECT PHASE 11 / EPSC-8 EPC Electrical System, SOUTH PROCESSING UNIT (SPU) CAMP	TOTAL INDONESIA,	PT Adhi Karya Tbk	2007 - 2009

EXPERIENCE LIST

INDUSTRIAL PROJECT	END USER	ORDER	YEAR
EPC Static Watt Compensator 50 MW & Static VAR Compensator 45 MVAR Substation Smelter Halmahera Timur Construction and Commissioning	PT ANTAM Tbk	NR Electric & PT Kencana Alam Putra	2023
Dismantle OHL Water Intake Electrical Installation & Testing Works	PT. Riau Prima Energi	PT. Riau Prima Energi	2021
PT Hyundai Motor Manufacturing Indonesia Project in Indonesia Install and Test / Precommissioning Electrical Work	PT Hyundai Motor Manufacturing Indonesia	PT Hein Global Utama	2020
FIBERLINE Upgrade #1 Project Electrical Installation Package 1 & Package 3 Electrical Installation & Testing Works	PT Riau Andalan Pulp & Paper	PT Riau Andalan Pulp & Paper	2020
TG#8 Mill Upgrade Project Electrical (HV) Installation Services	PT Riau Andalan Pulp & Paper	PT Riau Andalan Pulp & Paper	2019
Pangkalan Kerinci Project Supply Spare Part 150kV Disconnecter SSBIII-170 1600A	PT Riau Andalan Pulp & Paper	PT Riau Prima Energi	2018
OKI Mill Plant Installation Work for Power Distribution System Electrical Installation	OKI Pulp & Paper	OKI Pulp & Paper	2015
OKI Pulp & Paper Installing 33kV GIS (84 feeders) & 150kV GIS (10 Bays)	OKI Pulp & Paper	OKI Pulp & Paper	2015
LV & MV Construction and Commissioning	PT. Indorama	PT Siemens Indonesia	2013
Tonasa V Main Installator Electrical and Instrument Main Installator Package C3101 Services in Tonasa V – Sulawesi Selatan	PT. Semen Tonasa	PT. Semen Tonasa	2011
PT PERURI Maintenance SwitchYard 150kV, OLTC Siemens & Union Transformer 150/20 kV incld Relay Trafo and Circuit Breaker 150 & 20kV	PT Perum Peruri	PT Perum Peruri	2010
TRACTION PROJECT (Railway) Construction & Commissioning Traction Substation: HSCB 1500 VDC, 3000A, VCP, Transformer for KARET, LIMO, SERPONG, JURANG MANGU, MAJA, CIATER Traction System.	PT KAI (Kereta Api Indonesia)	PT Siemens Indonesia Mobility	2006 - 2009
Medium Voltage Retrofit Retrofit 36 cubicles MV Switchgear for Power House Pulo Gadung, Kalimantan and Cakung	PT AETRA AIR Jakarta	PT AETRA AIR Jakarta	2008

<p>Medium Voltage Retrofit Retrofitting 13 panels of MV Switchgear , (Replace breaker & interlocking system)</p>	PT Angkasa Pura (Soekarno Hatta Airport)	PT SCHNEIDER Indonesia	2008
<p>PT PERURI Repair, Testing & Commissioning of Protection & AVR</p>	PT Perum Peruri	PT Dian Graha ElektriKa	2008
<p>PT Grand Indonesia (Hotel Indonesia) & Pacific Place, Jakarta Construction & Commissioning Drytype Transformer (1000 ~ 2400 KVA) 44 unit for Grand Indonesia & 35 unit for Pacific Place</p>	PT Grand Indonesia and Pacific Place	PT Siemens Indonesia PTD Division	2007 - 2008
<p>Oil Additives Plant – Rohmax Singapore Commissioning Automation System, DCS – Siemens PCS 7</p>	Rohmax Singapore	Siemens Pte Ltd Singapore	2007 - 2008
<p>PT Siemens Indonesia PTD Division (QA/CS Dept)</p> <ul style="list-style-type: none"> • Wiring & connection various MV Siemens panels • Pre-commissioning of 500KV, 220KV, 110KV, 22KV control panel for Di Linh, Dai Ning, Phan Ri Vietnam substation for Hydropower plant project • Pre-commissioning of 150KV, 22KV control panel for Petrobrass Dubai Substation 	PT Siemens Indonesia PTD Division	PT Siemens Indonesia PTD Division	2005 up to 2008
<p>PT Freeport Indonesia, Papua 10MVA Transformer (Commissioning) at Low Land Power Plant Medium Voltage Switchgear Maintenance Mil74</p>	PT Freeport Indonesia	PT Pimurho & PT SAS International	2005 & 2007

EXPERIENCE LIST			
MAINTENANCE PROJECT	END USER	ORDER	YEAR
Major Maintenance Cirebon Power 660MW Electrical Maintenance (contact service)	PT Cirebon Electric Power	PT Cirebon Electric Power	2019 - 2025
PT SKS Listrik Kalimantan Second Outage Instrument & Control and Valve / Switch Calibration PLTU 2 x 100MW Unit 1 & 2 Palangkaraya Kalteng	PT SKS / DSSP Group / Sinarmas Grup	PT SKS Listrik Kalimantan	2021 2022 2023
Electrical Serious Inspection Unit 2 PLTU Keban Agung Sumatera Selatan	PT Priamanaya	PT Priamanaya	2023
PT DSSP Power Sumsel PLTU 2 x 150MW Bayung Lencir Repair MV Panel 6,3kV Busbar and Switchgear Project	PT DSSP Power Sumsel / Sinarmas Grup	PT DSSP Power Sumsel	2021
150kV Bus "B" Outage and PM 150kV Bay Project Electrical Maintenance Works	PT Riau Andalan Pulp & Paper	PT Riau Prima Energi	2018
PLTU Lebak Banten Energi 660MW Suralaya Maintenance Electrical Equipment, Trafo, Busduct, Switchyard & LV Motor	PT Lestari Banten Energi	PT Lestari Banten Energi (Genting Energy)	2018 - 2023
Replacement DS-HSES Unit & VT Unit on Bushing Side GIS 500kV Phase B Unit 8 at Paiton Maintenance of Electrical	PT. POMI	PT Hitachi Asia Indonesia	2018
Inspection, Maintenance and Testing Service for High Voltage Equipment on U60 Outage Inspection, Maintenance and Testing Service	PT Jawa Power	PT Jawa Power	2018
Major Maintenance Cirebon Project Maintenance of Electrical	PT Cirebon Electric Power	PT Cirebon Electric Power	2014 & 2016
TJB Unit #3 Planned Maintenance Outage Maintenance of electrical and C&I	PT. KPJB	PT. KPJB	Jul 2015 - Aug 2015
North Duri Cogeneration Plant, Chevron, Riau Major and Minor Overhaul Gas Turbine Generator Unit 1, 2, 3 (@ 125MW)	MCTN Chevron	PT Torishima Guna Engineering	2012 - 2014
Paiton Unit 3 – 800MW Electrical Maintenance	Mitsui	PT. IPMOMI	2013

PLTD Pesanggaran Bali Electrical Maintenance	PLN	PT ABB Sakti Industri	2013
PLTU TANJUNG JATI 2 Maintenance HV Equipment, 150kV and 500kV GIS Switchyard	PLTU TANJUNG JATI 2	PT Siemens Indonesia PTD	2008 - 2009
Tanjung Enim Lestari Pulp & Paper Maintenance Turbine Generator, Electrical maintenance	Tanjung Enim Lestari Pulp & Paper	PT Siemens Indonesia Power Generation	2008
PT Newmont Batu Hijau Electrical & Instrumentation scope for Limited Outage Turbine Generator Unit #51	PT Newmont Batu Hijau	PT Siemens Indonesia PGS	2007 - 2008
PT PLN (PLTGU Belawan / Power Plant), North Sumatera Electrical & Instrumentation Scope for Major Overhaul / Up grade Gas Turbine Generator Unit 1.1 (400MW)	PLN Belawan	PT Siemens Indonesia Power Generation	2006
Paiton Power Generation Unit 5 & 6 Power, East Java Maintenance Circuit Breaker Analyzer & Inspection GIS 500 kV; Trafo 760MVA, Busduct 21kV & Generator Star Point	YTL JAVA POWER	PT Siemens Indonesia PTD Division	Routine: 2006 up to 2010
Muara Tawar Power Plant (Indonesia Power), Bekasi Electrical & Instrument Maintenance (Routine Maintenance) Unit 3.1; 3.2; 3.3; 4.1; 4.2; 4.3 @143 MW Gas Turbine Generator.	PT Siemens PGOM	PT Siemens PGS & PGOM	Routine: 2006 up to 2012
North Duri Cogeneration Plant, Chevron, Riau 1. Major Overhaul Gas Turbine Generator Unit 1, 2, 3 (@ 125MW) 2. Electrical & Instrument Combustion Inspection TG Unit 1, 2, 3	MCTN Chevron	PT Siemens Indonesia	Routine: 2006 ~ 2010 up to 2013

EXPERIENCE LIST			
CIVIL	END USER	ORDER	YEAR
<p>Construction for SMGP Transmission Line & Substation Project at Mandailing Natal, North Sumatra</p> <p>Substation and Transmission Lines execution and completion of construction, supply of raw material, site delivery, construction, installation, inspection and testing, pre-commissioning & commissioning.</p>	Powerchina Huadong Engineering Corporation Limited	Powerchina Huadong Engineering Corporation Limited	2017 - 2019
<p>KALSEL 2x100 MW, Coal Fired Power Plant, Tanjung Tabalong, South Kalimantan Scope of Work: EPCC</p> <ul style="list-style-type: none"> - KALSEL Switchyard Foundation (5 bays) - Tanjung Substation Extension Foundation (2 bays) - 150 kV Transmission Line Tower Foundation (15 towers) - 150 kV Transmission Line Crossing Gantry Foundation (2 sets) - Substation Drainage - 20 kV Transmission Line Pole Foundation (7 km) - Water Pump House Foundation - Raw Water Transfer Pipe Line Foundation (7 km) 	PT Tanjung Power Indonesia	Hyundai Engineering	2016 - 2018
<p>Pemindahan Outgoing GT 2.3 Gresik ke 150kV Civil Work & Material Procurement EPC Isolated Phase Busduct and Relay Control Panel</p>	PT Pembangkit Jawa Bali Unit Pembangkitan Gresik	PT Rekadaya Elekrika	2018
<p>Switchyard 150kV Indoliberty & GI Maliby Karawang Barat Cable Duct, Fence, Road & Control Building</p>	PT Indoliberty	PT Citra Mas	2014
<p>Batch-1 & Batch-2 20kV Mining Electrification, Tanjung Tabalong, South Kalimantan Scope of Work: EPCC</p> <ul style="list-style-type: none"> - 20 kV Transmission Line Pole Foundation (5 km +12 km) - 20 kV Compact Substation Foundation (8 sets) 	PT Makmur Sejahtera Wisesa (Adaro Group)	PT Makmur Sejahtera Wisesa (Adaro Group)	2013 - 2014
<p>EPCC Contract 66kV Remote Substation Interconnecting with 150kV PLN Maburai Tanjung South Kalimantan Foundation Gantry tower, Foundation Transformer, Cable Duct, Fence, Road & Control Building</p>	PT Makmur Sejahtera Wisesa (Adaro Group)	PT Makmur Sejahtera Wisesa (Adaro Group)	2011 - 2012
<p>Chemical & Oil Warehouse PLTU 2x30 MW Tanjung Tabalong, South Kalimantan Steel Structure, Foundation, Drainage</p>	PT Makmur Sejahtera Wisesa (Adaro Group)	PT Makmur Sejahtera Wisesa (Adaro Group)	2012

EXPERIENCE LIST

MECHANICAL	END USER	ORDER	YEAR
Repair Engine Diesel Generator MAK M8 453 Reconditioning Seat Cylinder Liner MAK 8M 453	PLTD Bagan Besar	PLN - DUMAI	2010
Valve Repair Gate Valve 12" Class 300, Globe Valve 2" class 600	Pertamina Balongan	PT. Golden Pratama Engineering	2010
Valve Repair Gate Valve 12" Class 300, Gate Valve ¾" class 800	Pertamina Balongan	PT. Golden Pratama Engineering	2010
Engine Repair Personel Project			
<ul style="list-style-type: none"> • COCKERILL • Manufacturing new exhoust manifold 	PLN Bengkulu	PLN Bengkulu	2009
<ul style="list-style-type: none"> • DEUTZ MWM TBD 232 V12 • Reconditioning exhoust manifolds 	PLTD Batu Panjang		n/a
<ul style="list-style-type: none"> • DEUTZ F 10L • Reconditioning cylinder head 	PLN - DUMAI	PLN - DUMAI	n/a
<ul style="list-style-type: none"> • MIRRLESS • Reconditioning cylinder head, valve seat ring, and spindle valve 	PLTD Bagan Besar	PLN - DUMAI	n/a
<ul style="list-style-type: none"> • Provide components, such as: Flexible for Exhoust, liner, exhoust manifolds and other components for all types of diesel engine generators. 	All User	All User	
VALVE REPAIR Personel Project			
<ul style="list-style-type: none"> • Hand Valve: Gate valve, Check valve, Ball valve, Globe valve, Plug valve, Butterfly valve • Safety Valve: Vacuum valve, Pressure Relief valve, Pilot valve, Pressure safety valve • Control Valve: Actuator, Controller, Positioner (pneumatic, Hydraulic, and Electric) • Online Repair • Insitu Repair • Online Leak Sealing 	<ul style="list-style-type: none"> • PT. Bridgestone Tire Indonesia, Bekasi • PT. Indonesia Power, Tg. Priok (PLTU) • PT. Pupuk Sriwijaya, Palembang • PT. Asahimas, Cilegon • PT. Chandra Asri, Cilegon • Shell Eastern Petroleum, Singapore • Mobil Oil Singapore • Singapore Refining. Co • Ethylene Glycol Singapore • The Polyolefin Co, Singapore • Esso Singapore Pte. Ltd. • Philips Petroleum Singapore Corp. • Titan Petrochemical Company Malaysia • Pertamina UP Dumai; Cilacap; Balongan; • PT. Inco, Sulawesi • PT RAPP, Pekanbaru • PT. Pertamina, 		1995 - 2009

EXPERIENCE LIST

TELECOMMUNICATION PROJECT	END USER	ORDER	YEAR
Berca LTE Project 2015 Area: Pekanbaru	Berca	PT Huawei Tech Investment	2015 - 2018
H3I MEGA TK Phase2 (MEGA 2) BTS & MW Installation and commissioning (new, swap, upgrade). Area: North Sumatra, Central Sumatra, South East Sumatra, Central Java.	HCPT	PT Huawei Tech Investment	2014 - 2018
First Media Medan LTE Project 2014 Area: North Sumatra	First Media	PT Huawei Tech Investment	2014 - 2018
Indosat Jaguar Project New,swap & modernization Area: West Java, Central Java, East Java	Indosat	PT Huawei Tech Investment	2015
NSN project Esat Java, Bali & Lombok BTS & MW Installation and commissioning	HCPT	PT Nokia Siemens Network	2012 - 2013
Telkomsel wireless 2012 (south east sumatera)	Telkomsel	PT Huawei Tech Investment	2012
Indonesia HCPT NEPA & MEGA TK Project (MEGA 1) BTS & MW Installation and commissioning (new, swap, upgrade). Area: North Sumatra, Central Sumatra, South East Sumatra, Central Java & East Jav	HCPT	PT Huawei Tech Investment	2011 - 2012
Re-Deploy project NSN to Huawei for Hutchison CP (three)	Hutchison CP	PT Huawei Tech Investment	2010 - 2011
GSM BTS, BSC, MSC, 3G, Microwave antenna Installation, Commissioning, Optimization and Up grading (Jawa, Sumatera, Sulawesi & Kalimantan)	Indosat Telkomsel Excelcom Hutchison CP	PT Nokia Siemens Network	2008 - 2009
PT Natrindo Telepon Seluler Survey Design Package & Tower Analysis for Central Java Area	PT Natrindo Telepon Seluler	PT Huawei Tech Investment	2008
Siemens - Hutchison CP (GSM 3G Project) Engineering Power System of Mobile Switching Center & MGW (Jakarta, Surabaya, Bandung, Cirebon, Solo, Semarang, Batam & Pekanbaru)	Hutchison CP	PT Siemens Indonesia COM CS	2007 - 2008
GSM 3G Project CME Survey Design Package & Tower Analysis for Balikpapan Area	PT INDOSAT	PT Huawei Tech Investment	2007
GSM 3G Project Radio Frequency Site Survey JABOTABEK, BANDUNG & LOMBOK	PT Excelcomindo	PT Ericsson Indonesia	2007
Electrical, Network & PABX System Hutchison CP Office Jakarta, Semarang, Surabaya & Denpasar	Hutchison CP	PT Siemens Indonesia COM CS	2006 - 2007
GSM BTS, BSC, MSC, 3G, Microwave antenna Installation, Commissioning, Optimization and Up grading (Jawa, Sumatera, Sulawesi & Kalimantan)	Indosat Telkomsel Excelcom Hutchison CP	PT Siemens Indonesia COM CS	2005 - 2006

EXPERIENCE LIST

REPAIR SERVICE ELECTRONIC	S/N	YEAR
HART Communicator, Fisher Rosemount Model 275	03121135M	May 2010
Antenna Frequency Analyzer ANRITSU S251C	337029	May 2010
Digital Insulation Test 5kV	96099010350996	May 2010
DC Dielectric Strength Test; Hipotronic DC 80 kV	9403152	August 2010
Digital Multi Meter, Fluke Model 187	79100581	October 2010
Digital Multi Meter, Fluke Model 187	89310161	October 2010
RCD (Residual Current Detector) Kyoritsu 5406A	WO185587	October 2010
Wesfalia Separator Control Model PLC 100/2	000001808	October 2010
Temperature Indicator, Sika Model ES980109226006	9205012	October 2010